

**Automatic air powered riveter specially designed to perform common riveting tasks in modern bodyshops including self-piercing rivets and standard flow form rivets.**

## ACCURATE SETTINGS

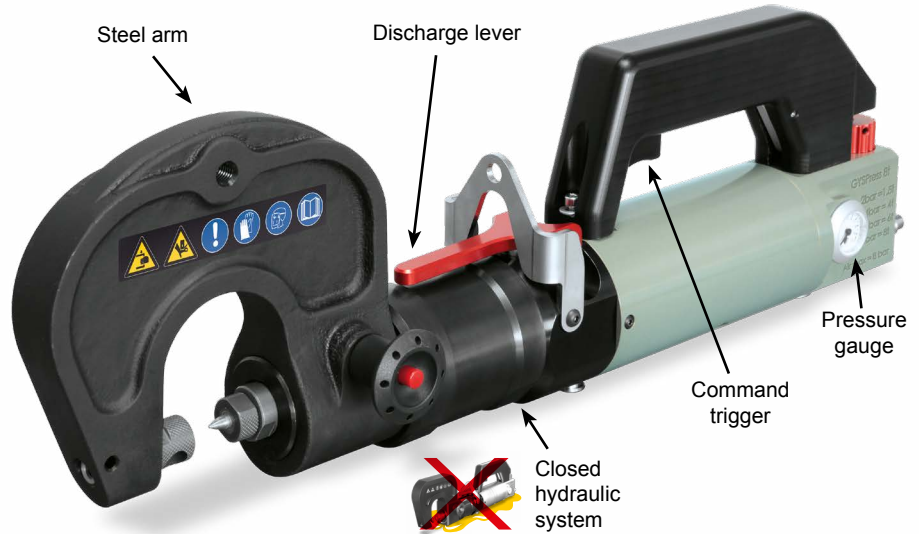
The user can manually adjust the **actuator speed** as well as **rivet pressure** according to the metal used in order to avoid panel distortion.



Speed control



Pressure control  
0 > 8 bar



## ERGONOMIC AND EFFICIENT

- Maximum pressure of **8 tonnes** with integrated pressure gauge.
- **Fast and easy** arm change.
- C-arm **swivels 360°** around the riveting machine axle.
- Selection of arms available for **difficult access situations**.
- Easy to use **ergonomic handle** and **trigger**.
- **Magnetic die** makes rivet positioning easy.

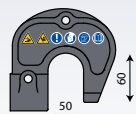
### Delivered with :

- 2 die keys
- 1 strap
- 1 arm HR1
- 1 handle for arm
- 1 box of rivets



- 1 standard die kit for extraction and rivet positioning :
- self-piercing (ø 3.3 et 5.3 mm)
  - flow-form (ø 5.6 mm)

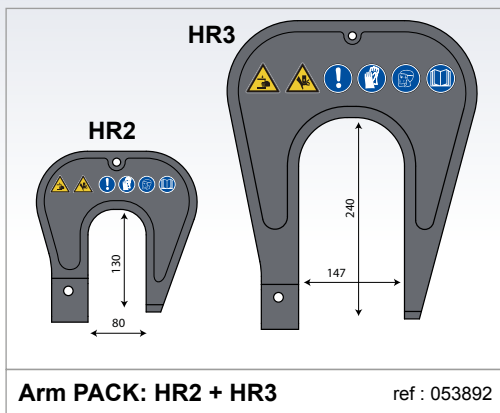
## ACCESSORIES



HR1 arm

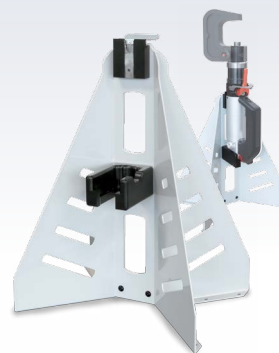


HR1S arm  
ref : 054219



Arm PACK: HR2 + HR3

ref : 053892



Support  
ref : 054158



Centre punch  
ref : 048379

		HR1 	HR1S 	HR2 	HR3 	Cycle time	AIR PRESSURE (BAR)
58 x 48 x 15 cm	6 kg	2 kg	2 kg	4 kg	9 kg	4 sec	normal 8 maxi 10